



Eze Investment Suite  
**2021.1**  
Update Tour





## The One For You!

As quickly as the year begins, we have a release ready for you! In this no-time-wasted first release of 2021, you'll find new features and enhancements for Eze EMS and Eze OMS.

What do we have to update you about? In Eze EMS, we're actually taking a look at something big on the horizon with **Multi-Factor Authentication** in future releases! Meanwhile in Eze OMS we give you a new reason to look through your hedging workflows with enhanced **Look-Through Functionality**.

## Happy New Year! Let's get started!

Eze EMS 2021.1

# New Possibilities.

## Expanding horizons.

Most of the time, we use these tours to show off big and shiny new features that are ready for you to work with, but we're starting this year off with a bit of a different approach. Our teams have been hard at work exploring all the ways we can perfect our system and drafting the blueprints for exciting new features that will be available in the near future. Read on to find out more about one feature we're particularly excited about: Multi-Factor Authentication in Eze EMS.

## Paving the Way for MFA

Your newest cyber superhero has heard your calls and is on its way! Multi-Factor Authentication is coming to save the day.

We know how important your work is, and we also know how scary the word "cyber attack" can be. That's why we're committing ourselves to making your systems as safe and secure as possible. Our teams have been hard at work laying the foundation for Multi-Factor Authentication (MFA), so you can be sure that you, and only you, have access to your valuable information.

While you may not see it yet, we have big plans for this feature. We can't wait to share more with you soon.

### Meet the new guy.

We can all agree, two is usually better than one. Two cookies are better than one cookie. Two layers are stronger than one layer. Two locks are safer than one lock. So, wouldn't two levels of login be better than one? We think so.

MFA is our way of upping the ante when it comes to cybersecurity. It offers you an enhanced login method that requires both your personal password and another piece of unique information that only you have access to. Get ready to rest easy knowing it's harder than ever for someone to pretend it's you and access your data.

# Here's To You, Release Two

Our next release is already getting ready and waiting in the wings. With so much going on behind the scenes, 2021.2 is sure to dazzle.

SS&C Eze releases updates for Eze EMS every six weeks, so each release offers enhancements and new features to offer you more. Contact us to find out more about what's included in Eze EMS 2021.1.

Eze EMS 2021.1  
**New Possibilities.**

Eze OMS 2021.1

# Eye Opening.

See what you can accomplish.

Rise and shine: the first release of the year is ready. Leave last year behind with this release of Eze OMS, so you can get 2021 off to a solid start! Take a look and see a couple of the features waiting for you when you upgrade to Eze OMS 2021.1.

## I'm Looking Through You

Accuracy and transparency are incredibly important in hedging workflows, so we've added a feature we think you'll like.

Look-Through functionality has been available in parts of the OMS for a while now, but in this release, we added it to modeling grids. By splitting composite securities into constituents, you can have the clearest sense of aggregation attributes when you run hedging workflows.

Be confident in your hedging in 2021.1!

## Singularly Enhanced

We've been looking for ways to improve single-screen trade entry since it was introduced back in 2020.8. In 2021.1, we've made the process more seamless.

You can now add brokers within the single-screen workflow via the Add a Working Broker window, which can be configured to automatically appear when you finish a trade-entry operation in the Allocation Expert: removing a step and lets you send your trade to the Trade Blotter that much more quickly.

There are a few additional details to this feature, and more single-screen bells and whistles, so be sure to take a look at the release notes for more.

## Hit The High Notes

It can be tough to distill some of our feature for this update tour, so don't forget to check out the release notes to see all of what our great releases have to offer!

SS&C Eze releases updates for Eze OMS every six weeks, so each release offers enhancements and new features to offer you more. Contact us for the complete release notes for 2021.1!

Eze OMS 2021.1  
**Eye Opening.**





Eze Investment Suite  
**2021.2**  
Update Tour





## A lot can happen in a second.

Just consider at this release: three products, 97 pages of release notes, all in a second release of the year! In this release you'll find new features and enhancements for Eze EMS, Eze OMS, and Eze PMA.

What did we pack in to this second of 2021? Eze EMS users can let us handle the heavy lifting through new **Automated Trading Rules!** Adjusting broker commitments has never been easier with the introduction of the **Change Broker Working Amount Window.** In Eze PMA, **Calculation and Saving Datasets** gets major enhancements to make looking towards the future just a little bit clearer!

## Sound Good? Time to jump in!



Eze EMS 2021.2

# Fired Up.

## Providing the power to do more.

While some of us may still be stuck in cold weather, we're heating things up here at Eze EMS. In our last release, we promised you that all the hard work going on behind the scenes would be coming to the stage soon, and in this release, we're starting with a bang. Eze EMS 2021.2 is packed full of exciting new features and enhancements that we're confident will improve your daily trading lives. Read on to see what's waiting for you when you upgrade to Eze EMS 2021.2.

## Automated Trading Rules

**We swear we're not just flexing: Automated Trading can now lift more weight than ever before.**

What if we told you that in addition to optimizing your automated trading order change workflow, this release also adds four new rule conditions and the ability to create automated trading rules for future options and equity options? You'd probably say there aren't enough hours in the day to make that happen. But we did!

Beginning in this release, you can create and save automated trading rules with Start Time and End Time, Market Cap, Market Cap Class, and User Message conditions. Rules can also be created using the new Future Options or Stock Options security types.

## Go the Right Direction

**We're giving you the power to go confidently in the direction of your dreams...or pair orders.**

Meet the new Default Pairs Direction drop-down list. You can find this new guy in the Pairs and Spreads tab of the Order Entry Properties window, and we're pretty sure once you meet, you'll be fast friends. Use this setting to determine the default direction for your pair orders, regardless of the order in which the legs are selected.

## Easing Your Options

It's said making good decisions is easy when there are no bad options.

We know clarity is necessary in your daily work. That's why we've added the ability to display the External Customer code for spread orders created using two staged orders. In addition, you can have the sub-account details automatically populate based on the External Customer of the Option Spread, removing any manual effort involved in this selection.

And if you think it couldn't get better, beginning in this release, when you unbundle an Option Spread order, only the option spread is cancelled. The individual legs are released back as staged orders, allowing you to continue work without starting from scratch.

## Stake Your Claim

We know how much of a headache it can be to keep track of who's working what and when.

That's why we've made it easier than ever to claim orders in your EMS! Beginning in this release, you can configure your system so that double-clicking anywhere on an order in the Market Minder allows you to claim the order before applying any other changes. You can also configure Eze EMS to always check that an order is being routed by the user that has claimed it before it's executed.

## Full Speed Ahead

There's so much more waiting for you when you download 2021.2, but we're already off and racing towards 2021.3!

SS&C Eze releases updates for Eze EMS every six weeks, so each release offers enhancements and new features to offer you more. Contact us to find out more about what's included in Eze EMS 2021.2.

Eze EMS 2021.2  
**Fired Up.**



Eze OMS 2021.2

# Established.

## Taking the best, and making it better.

Eze OMS has been around for a long time, and we refuse to believe that old dogs can't be taught new tricks. Each release we strive to make Eze OMS just that little better so you can reach that little farther. Read on to get a taste of just some of what waits for you when you upgrade to Eze OMS 2021.2!

## Going For Broke(r)

Adjusting broker commitments has never been easier, or faster.

Field	Value	Field	Value
Original Amount	750	New Amount	825
Uncommitted	1,000	Original Limit	40.00
		BID	42.62
		ASK	41.30
		MID	41.96
		LAST	43.41
		New Limit	39.90

Introducing the new for 2021.2 Change Broker Working Amount window: more than just window dressing, this comes with improved performance and greater functionality. Take advantage of additional ways to edit your Amount and Limit, see real-time prices when the data feed is available, and more easily view trade level data all through this new window.

You'll find this new window when you use the Change Broker Working Amount, Decrement Amount, Increment Amount, or Change Limit workflows. Need further details? You'll find those in the 2021.2 release notes.

## Et Tu F2?

Allocation Expert, F2, whatever you call it, we have updates for it.

Better performance, enhanced features, and increased workflow compatibility all await your Allocation Expert needs in Eze OMS 2021.2. All users can enable the new Auto Calculate feature: when enabled Eze OMS automatically calculates changes amounts when you tab out of Amount or Percent fields in Allocation Expert. Additionally, users configured with our Trading Persistence Service API see faster performance and more functionality in Allocation Expert! There's quite a few changes, so be sure to check out the release notes for more info!

## Round the Bend

They say “money makes the world go ‘round” and now it’s easier to round Net Money for currencies around the world.

Work in one currency, settle in another: it’s not new, but starting in the latest version of Eze OMS you can choose to have a specific currency round according to industry convention. Settling in Japanese Yen? Skip creating custom SecTypes and let us handle rounding it to the nearest Yen.

Have specific needs for certain currencies? Want certain currencies to be truncated or not rounded at all? No problem, our team can help make that happen for you.

## Marching On

With nine releases, 2020 versions are all wrapped up. Now it’s turning our attention to 2021.

SS&C Eze releases updates for Eze OMS every six weeks, so each release offers enhancements and new features to offer you more. Contact us for the complete release notes for 2021.2!

Eze OMS 2021.2

# Established.



Eze PMA 2021.2

# Step Ahead.

Software that's as ready as you are.

Whether it's getting a better picture of your current state, or planning your next move, Eze Portfolio Management and Accounting is ready for it. Improvements for financial reports, Cash Projections, infrastructure compatibility and more await you in this latest version. Read on to see where there upgrade path can take you.

## Save the Future, Today!

History repeating itself in your financial reports? Don't be doomed to repeat it.

Calculate and save datasets for future reference when viewing financial reports, like Trial Balance and Income Statements – just select your dataset when you open your report and an accurate picture of your financials on the date you generated the data appears! No more worries about data getting overwritten with backdated transactions when you generate them either.

That's not all however, there's also a new grid: Financial Datasets on which you can manage your datasets and we've included the ability to save them permanently or temporarily when you create them and to share them with others.

## Peak Performance

We've tuned up Performance Contribution Summary and Composite Performance Contribution Summary reports!

Who doesn't like performant performance reports? These new reports display performance data for up to four periods! Added extras include faster generation than their pivot/browser-based cousins (but we still like them too), and drill-down ability to fund/strategy/security level.

## Better Than a Crystal Ball

While predicting the future is functionality we're still yet to perfect, at least we can continue to improve Cash Projections in Eze PMA.

Cash Projections now supports reporting on projected Income and Expenses – including management and admin fees. That's not all though, these accruals are supported in situations where the fee allocations are yet to be determined!

## Great For Updates

We know that when deciding to update Eze PMA, you may also want to upgrade your infrastructure.

That's why we made sure the latest version of Eze PMA works with the newest server and database systems: Microsoft® Windows Server® 2019 and Microsoft SQL Server® 2019.

Not ready to upgrade your backend systems? Don't worry, we've retained backwards compatibility too, just ask us for more details!

## Even More in Four

This year PMA releases on even numbers, and 2021.4 is in the works to bring you even more functionality..

SS&C Eze releases updates for Eze PMA every twelve weeks, so each release offers enhancements and new features to offer you more. Contact us for the complete release notes for 2021.2!

Eze PMA 2021.2  
**Step Ahead.**





Eze Investment Suite  
**2021.3**  
Update Tour





## Your three point play.

You don't wait on the sidelines: you get in the game and look for the big wins! Good thing you have a roster of stars from the Eze Investment Suite on your team. In our 2021.3 release, you'll find new features and enhancements for Eze EMS, Eze OMS, and for the first of two releases this year: Eze Investor Accounting.

Who's on the 2021.3 roster? Eze EMS security steps up for a big play, with the addition of **Multi-Factor Authentication!** Eze OMS users can more easily keep up with the changing demands of investors with new **ESG Fields** in the Security Information window. Enhancements for **Shadow Reconciliation** are ready to get in the game in Eze Investor Accounting!

## No more timeouts, time for action!

Eze EMS 2021.3

# Secured.

## Increased security, even better workflows.

We've always been committed to finding new ways to keep your data safe and your workflows easy, and this release is no exception. We've packed 2021.3 with a range of exciting features and enhancements that increase your system's security and ease your daily activities. Read on to find out more about what's waiting for you when you upgrade to Eze EMS 2021.3.

### The Winning Factor

We may have hinted at it earlier, but we're finally ready to show it off: **Multi-Factor Authentication** is ready for you.

When it's cold out, you add an extra layer to stay warm. When you're painting, you add an extra layer for a richer color. Adding layers always seems to help. So why not add a layer to your Eze EMS and RealTick Extra login? That's exactly what we did with Multi-Factor Authentication, or MFA for short.

When you log in to Eze EMS or RealTick Extra with MFA you're required to enter both your personal login information and a unique One Time Password (OTP) that only you have access to. You can choose how you receive the OTP via the new **2FA Configuration Page**, which is accessible through both Eze EMS and RealTick Extra. Just like the name suggests, that OTP is only good for a one-time use, so there's never a risk of somebody stealing your info and pretending to be you.

## Bulked Up Bulk Cross

Crossing the street is easy. Bulk Cross should be, too.

Crossing orders from different funds? We've got a great new feature for you. Starting in 2021.3, you can perform a Bulk Cross using a broker route, providing you with the ability to send all cross eligible orders to a specific broker. In addition, you can add a message to your cross order to provide the broker with specific crossing instructions, erasing any risk of confusion and guaranteeing the cross is executed exactly as you wanted.



## A Great Vintage

Just like a fine wine, Automated Trading is only getting better over time.

If you work at a firm that uses a non-claiming workflow, then this Automated Trading enhancement is for you. We've added increased support to the non-claiming automated trading order change workflow so that any order change that fails re-evaluation is sent to your trading desk to be manually accepted or rejected by a trader.

Don't worry, though, we've added some fun for everybody else, too! Beginning in this release, any changes made to the quantity or price of your automated trading orders are re-evaluated against the original rule conditions. This guarantees every change that's passed onto the child order continues to meet the original conditions.

## Even More in Four.

While we're thrilled to introduce you to all these exciting features and enhancements in 2021.3, we're already hard at work cooking up new ways to make your experience with Eze EMS even better with 2021.4.

SS&C Eze releases updates for Eze EMS every six weeks, so each release offers enhancements and new features to offer you more. Contact us to find out more about what's included in Eze EMS 2021.3.

Eze EMS 2021.3

# Secured.

Eze OMS 2021.3

# In Tune.

## Keeping your work on song.

It may seem brief, but some of our releases really shine in the small adjustments to keep everything going. Like an orchestra making sure all their instruments are in musical harmony, our teams have worked to make Eze OMS 2021.3 strike the perfect chord. Read on to see some features waiting for you, and check out our release notes for even more of the small details.

## As Easy as ESG

Ensuring your investments' sustainability and impact has never been more important, or easier.

As Environmental, Social, and Governance (ESG) criteria continues to become a critical factor in investment decisions, we've made it easier to track which securities meet your ESG criteria, and which ones don't.

Beginning in Eze OMS 2021.3 you can use the **Rating** and **Approved for Trading** fields in the Security Information window to make sure you're only working with the securities that meet your standards. Even more, these fields can be brought into your Analytics grids as **ESGRating** and **ESGApprovedForTrading**.

## Round and Round Again

In our last release, we told you about the ability round Net Money based on the industry convention of a currency. In 2021.3, we have another square deal on rounded numbers.

Commissions and fees are a fact of trading, but when you're working with multiple currencies, it can easily get a bit tricky. Say so long to multiple fee schedules and simply tell Eze OMS to use the settlement currency's industry convention via the Commission Setup Details and Fee Setup Details windows.

# Poring over Four

With the third release in the books and ready for you, we're studying up on what you need, and getting it ready for you!

SS&C Eze releases updates for Eze OMS every six weeks, so each release offers enhancements and new features to offer you more. Contact us for the complete release notes and see all of what 2021.3 can offer you.

Eze OMS 2021.3  
**In Tune.**



Eze IA 2021.3

# Tried and Tested.

## Tools and functionality you can count on.

Eze Investor Accounting is more than just Taxes and K1 forms to start the year (even if they are really important!). Our teams have been hard at work for months to take the tools you count on to new heights. While this is only a small part of what waits for you in IA 2021.3, we think you'll like what you see – read on to find out more!

## Working In The Shadows

**Looking for a new way to use the Shadow Reconciliation Tool in Eze Investor Accounting? We've got it!**

The Shadow Reconciliation Tool includes a new utility that allows users to reconcile their funds at the Investment Group level for a fund, investor role, investor and investor group combination. Users can choose several display options and can also apply true-ups to any differences within reconciliation thresholds.

Additionally, the Shadow Reconciliation Audit Report includes a new filter, Use External ID that allows users to view true-ups by External ID. The report details the Administrator's balances and Investor Accounting balances prior to true-ups.

There's even more to find for Shadow Reconciliation and Shadow Balances, so be sure to look through the release notes for more details!

## Transfer Power

**Investor Transfers have you all switched around?  
We're giving you more options for Investor Transfers.**

You can now easily select investors who choose to participate in Investor Transfers by setting up Investor Roles that are excluded from side pocket participation. In 2021.3 you'll find new checkboxes in the Investor Role Screen and the Investor Transfer Screen so this is as easy as could be.

## Dividends Take the Stage

The approvals reviewed and made in Maker Checker is a crucial part of your workflow, and we're excited to add Investor Dividends added manually or imported as part of it.

First, the setup: a new checkbox is available on the Workflow tab of the Environment Setting Screen: Stage Investor Dividends. If the box is checked, additions and edits of Investor Dividends are moved to a separate staging table allowing users to approve transactions.

Moving to the Investor Dividend edit screen, you'll find new highlighting on transactions awaiting approval. Forms with information pending approval contain a message in the lower left-hand corner of the screen that reads, the information that is highlighted has not been approved at this time. If a field is highlighted and was approved prior to the latest revision, users can hover over the fields and a box containing the last approved change appears.

Then we can't forget the actual Approval screen, which includes the fund, effective date, investor role, and series in the description field when approving Investor Dividends.

There's even more to this functionality that we can't fit in this space, so check out the 2021.3 release notes so see how this new feature pays figurative dividends by approving Investor Dividends.

## Lucky Number Seven

While we'll be back again for 2021.7, there's even more to find out about in this release! With our six month release cycle, there's so many more features than we can fit here.

SS&C Eze releases updates for Eze IA every six months, so you can count on getting a featured packed update. Contact us for the complete release notes and see all of what 2021.3 can offer you.

Eze IA 2021.3

# Tried and Tested.





Eze Investment Suite  
**2021.4**  
Update Tour





---

## Fore!

2021.4 has stepped up to the tee and is ready to show off its million-dollar swing. With new features and enhancements for Eze EMS, Eze OMS, and Eze PMA, this release is a hole-in-one.

Wondering what 2021.4 has in its bag to up your game? Big enhancements to **Broker Algo Wheels** and the ability to use **Server Algo Wheels** on manual algo orders in Eze EMS is a great place to start. New interfaces to consolidate **Repo Functionality** have arrived in Eze OMS. And Eze PMA is smoothing and improving your experience by integrating updates from **DevExpress® v20.2**.

**The honors are yours. Let's learn more!**

Eze EMS 2021.4

# Smooth Sailing.

## Nimble new tricks that get the job done.

With Eze EMS, we like to run a tight ship and do everything we can to make your experience better with each release. That's why we're always looking for more. More ways to improve your workflows, new features that increase efficiency, and different ways to make Eze EMS your favorite first mate. Read on to explore the copper-bottomed features and enhancements that are at your command when you upgrade to Eze EMS 2021.4.

## Explore New Routes

We're proud of the work we've done with Broker Algo Wheels, but that doesn't mean we're ever satisfied.

Are you a broker working at a firm that trades over various markets? This feature is for you: in this release, we've introduced the ability to create Broker Algo Wheels that execute when any of the subroutes support the market, rather than requiring all subroutes to support the market.

In addition, we're making it easier than ever to find the wheels that support your symbol when creating orders by filtering the Strategy drop-down list on order entry forms to only display available routes.

## Bring the Crew Together

Looking for an easy way to share algo wheel configurations and updates across your firm? We've got you covered.

Starting in 2021.4, algo wheels created through the Algo Wheel window are saved to the server and can be shared with all Automated Trading users at your firm.

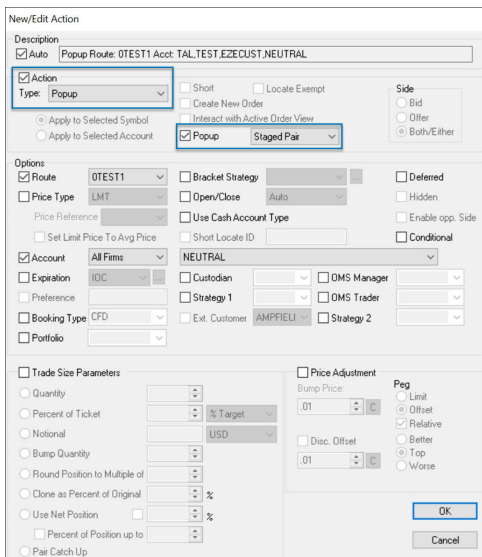
And since we're always looking for more, these Server Algo Wheels can now be used to execute both automated trading orders and manually routed algo orders, bringing their potential to the next level.

# Keep Things Simple

Get your orders in shipshape with the click of a button.

Looking for a quick and easy way to access and configure the Staged Pairs Order form? Starting in this release, you can configure an order action button that immediately launches the Staged Pairs Order form when clicked.

But the one-click fun doesn't stop there. In 2021.4, we've also added the ability to use Bump Quantity order action buttons on completed orders, allowing you to quickly send change requests to brokers and adjust the quantity of completed orders.



## Turn the Corner

We may be almost halfway through the year, but our teams are nowhere near done! Don't forget to check out the release notes to see everything waiting for you in 2021.4 and get ready for a wave of new excitement in .5.

SS&C Eze release updates for Eze EMS every six weeks, so each release offers enhancements and new features to offer you more. Contact us to find out more about what's included in Eze EMS 2021.4.

Eze EMS 2021.4

# Smooth Sailing.



Eze OMS 2021.4

# Eyes on the Prize.

Leave it all on the track.

We're always finding new ways to enhance and improve your workflows, so you can easily slide across the finish line, and this release is no exception. We've introduced a range of new features and enhancements aimed to help you take the lead and stay there. Read on to see what's waiting for you in Eze OMS 2021.4.

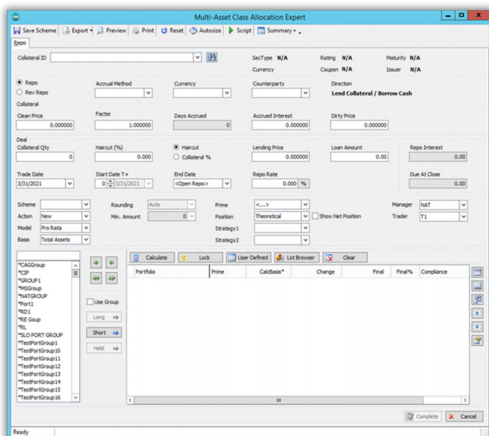
## Consolidate and Elevate

Eliminate your woes by centralizing your repo flows.

Repo functionality is nothing new in Eze OMS, but in 2021.4, we're bringing it to new heights. In this release you'll find consolidated and improved functionality with the new **Repo** tab in the Allocation Expert (shown left) and the new **Repo Deal Manager**.

These new interfaces provide you with control over the entire repo trade lifecycle, from creating, to validating, to re-rating, to closing or canceling, all in a centralized location. You can now easily book, view, and manage repos in an efficient and thorough way.

Take a look at the 2021.4 release notes for a detailed overview!



## Go for Broker Modernization

Back in 2021.2, we introduced improved broker modification workflows. Now, we're adding even more.

We've built on those improvements from 2021.2 and focused our efforts in this release on new bump button workflows and user interfaces. Using the new Edit Price and Edit Amount Bump Button windows, you can select from a list of edit options and edit by percentage. And for some extra peace of mind, we've added validation for all these changes prior to saving them.

## Don't Hate. Reevaluate!

Ever found yourself wanting to reevaluate Eze OMS trades for Eze EMS synchronization? Now you can!

We've updated Eze EMS/OMS Auto Trade Sync functionality to allow you to sync a trade with Eze EMS at any point in the trade's lifecycle.

When you create an OMS trade, it isn't always eligible to sync with Eze EMS out of the gate. Using the new **Sync with Eze EMS** shortcut menu option, you can continue to take advantage of Auto Trade Sync functionality and manually sync the trade at any time!

## Raring to Go

There's so much more to find in 2021.4, like increased commission and fee schedule customization, enhancements for running rebalances, and increased security in Report Studio. But we also can't wait to share even more excitement coming your way in 2021.5. Stay tuned!

SS&C Eze releases updates for Eze OMS every six weeks, so each release offers enhancements and new features to offer you more. Contact us for the complete release notes and see all of what 2021.4 can offer you.

Eze OMS 2021.4  
**Eyes on the Prize.**

Eze PMA 2021.4

# Level Up.

## Helping you raise the game.

Our teams have been hard at work since the last release developing exciting new features that aim to elevate the efficiency of your day. Eze PMA 2021.4 introduces upgrades from DevExpress®, a new report for dividends, improvements to Yield Benchmarks, and so much more. Read on to see the game changing options waiting for you.

## All Aboard the DevExpress®

Hold onto your hat and enjoy the ride! We're shifting things up a gear with DevExpress® v20.2.

We've maintained a consistent and smooth experience across our UI for a while now, but when that consistency starts to sacrifice performance, it's time to take action and make the necessary upgrades.

Beginning in 2021.4, Eze PMA is integrating features available in DevExpress® v20.2 that improve performance and user-experience, including enhanced support for large data sets. Take full advantage of exciting new features, such as multi-level grid grouping or the new Conditional Formatting filter options.

## No More Fallback Fallouts

Bringing control of Yield Benchmarks to your fingertips.

We've introduced the ability to specify whether Yield Benchmarks are marked for inclusion when running the Benchmark Maintenance Procedure. This allows you to use different pricing sources for your benchmarks instead of one source for all. For existing Yield Benchmarks, you can set Download to Never, so that when you run the Benchmark Maintenance Procedure those marked as Never are excluded from pricing. For any new Yield Benchmarks you download, the default Download value is Never.



# Plan for Success

Want to get ahead with managing those earned, unsettled receivable and payable dividends in your fund? Listen up!

Description	CCY	Ex Date	Pay Date	Gross TC	Gross FC	Withholding Tax TC	Withholding Tax FC	Net TC	Net FC	Rate	Entitled Quantity
<b>Fund: Alpha</b>					343			-16	326		
<b>Account: CS</b>					343			-16	326		
<b>Strategy: Strat1</b>					343			-16	326		
VERTICAL CAPITAL INCOME	USD	19-Apr-21	30-Apr-21	-8	-8	0	0	-8	-8	0.0788	-100.00
COSCO SHIPPING PORTS LTD	HKD	15-Apr-21	22-Apr-21	1,750	225	-88	-11	1,663	214	0.1750	10,000.00
Trade	Type	Date	Price	Ccy	Amount	Fund	Account	Strategy	Settles		
102287	DivIncome	15 Apr 21	1.0000	HKD	1,750.00	Alpha	CS	Strat1	22 Apr 21		
102288	DivTaxes	15 Apr 21	1.0000	HKD	87.50	Alpha	CS	Strat1	22 Apr 21		
ATLAS CORP	USD	19-Apr-21	30-Apr-21	125	125	-5	-5	120	120	0.1250	1,000.00

Starting in this release, we're introducing the Dividends Receivable and Payable report. Your key to getting ahead and staying there. The report details earned, unsettled dividends for date ranges of your choice, helping you make quick, well-informed dividend-related investment decisions.

## Halfway There

We're halfway through our releases for this year, but that doesn't mean we're slowing down! Our teams are already hard at work developing a whole new set of exciting features and enhancements coming your way in 2021.6.

SS&C Eze releases updates for Eze PMA every twelve weeks, so each release offers enhancements and new features to offer you more. Contact us for the complete release notes for 2021.4!

Eze PMA 2021.4  
**Level Up.**





Eze Investment Suite  
**2021.5**  
Update Tour





---

## Take five.

We know the workday can be exhausting. That's why we've got a major break coming your way! In 2021.5, you'll find new features and enhancements from Eze EMS and Eze OMS that help you relax while optimizing your ability to get the job done.

How can you relax and be productive at the same time? Eze EMS is helping you skip a couple steps with brand new **Order Action** and **List Trading hot buttons**. Eze OMS is giving you one place to go for all your operations with the new **Eze Operations Portal**. And together, Eze OMS is bringing **Managed Lists** to Eze EMS for Eze EMS/OMS Integration users.

## Time to sit back, relax, and enjoy the show!



Eze EMS 2021.5

# Never Max Out.

## The support you need to win with ease.

Like a finely tuned race car, we like to keep Eze EMS in peak condition and running smoothly at all times. In this release, we've introduced new features and enhancements that allow you to keep your foot on the throttle while Eze EMS calls the pacenotes. From new hot buttons to increased automation, 2021.5 is stocked full of all the parts you need to reach that checkered flag. Read on to learn more about what's waiting for you in Eze EMS 2021.5!

## Get in the Groove

Two teammates working together to put you on the best track.

Are you an Eze EMS/OMS Integration user? This one's for you. Those **Managed Lists** that you love in the OMS can now be applied to Eze EMS. That means you can control the visibility of OMS reference data – like the OMS Manager, Custodian, and User Strategy values – for Eze EMS users as well.

But wait, there's more! If you're an Eze EMS/OMS Auto Trade Sync user, we've added the ability to automatically bundle Staged Futures from Eze OMS to create Calendar Spreads in Eze EMS.

## No Strain on the Brain

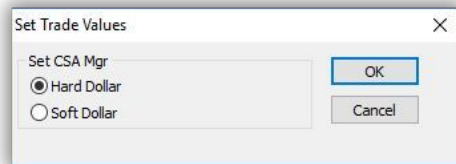
Don't race the clock. Embrace it.

Trading on markets in different times zones? We know how confusing it can get when your day is just starting, but your order's day is ending. That's why we've introduced the ability to automatically cancel live child orders and their parent order when the exchange they are listed on closes, regardless of the orders' designated Stop Time. Spend more time focused on the prize and let us watch the clock for you.

# Ready, Click, Go

They may be called hot buttons, but we promise they're cool to touch.

In this release we've added not one but two new hot button options to help you quickly execute and fill your trades with confidence. First, meet the newest List Trading hot button. When added to your toolbar, this little guy will bring up the **Set Trade Values** popup window (shown left) so you can confirm that you have the right **Hard** or **Soft Dollar** value tagged on that order.



Next up is the **Target Percent Change** hot button. This new action gives you the power to quickly increase the quantity of a live child order to a volume that will fill the parent order once it's completed. Just add it to your toolbar and you're ready to click and go.

## Four More Laps to Go

We've passed the halfway point, but we're picking up the pace. Our teams are already hard at work on some shiny new features for 2021.6, but don't miss everything 2021.5 has to offer! Check out the release notes for more info on our latest release.

SS&C Eze release updates for Eze EMS every six weeks, so each release offers enhancements and new features to offer you more. Contact us to find out more about what's included in Eze EMS 2021.5.

Eze EMS 2021.5

# Never Max Out.

Eze OMS 2021.5

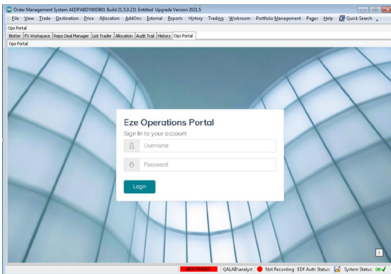
# New Heights.

## Climbing to endless possibilities.

When hiking, the view only gets better when you trek to the next level. So why not apply that same philosophy to Eze OMS? In this release, we've introduced enhancements to existing features you know and love that increase your ability to do more, as well as a game changing new portal that's ready to carry you to the top. Read on to discover some of the trail magic waiting for you when you upgrade to Eze OMS 2021.5.

## Introducing Eze Operations Portal

This isn't just a slack-pack. The new Operations Portal has everything you need and more.



Looking for a place to update positions, perform corporate actions, and maintain trading and settlement holidays? Time to add the **Eze Operations Portal** to your map. This new web-based application is accessible from your Eze OMS or through a supported web browser, and it incorporates pre-existing as well as new OMS functionality.

But that's not all! The Operations Portal also allows your SS&C Eze client service representative to efficiently do some of the behind-the-scenes work involved in updates and upgrades, letting you focus on the work that matters most.

It's off to a great start, but there's more to come. We've got big plans for the Operations Portal, so stay tuned!

## Tailoring Your Repos

Enhancing repo functionality to guarantee the perfect fit.

Remember last release when we introduced the new **Repo** tab and **Repo Deal Manager** for new installations of Eze OMS? Well in this release, we've made it even better. This new repo functionality is now available for upgrades, allowing you to continue performing your repo workflows (and more!) from a centralized location.

But we didn't stop at this first lookout; we kept climbing! We've also introduced improved **Loan Amount** rounding logic to the Repo tab, allowing you to configure counterparty-specific rounding methods and intervals.



# Committed to Commitments

Clearing the path for broker commitment workflows.

What's that? You want more functionality for the **Change Broker Working Amount** window? We have you covered in 2021.5. Starting in this release, you can view a trade's **Filled** amount directly in the window.

But we didn't stop there – we've enhanced the Change Broker Working Amount window even further so that whenever broker commitments are updated for a trade and the window is open, the **Filled** and **Uncommitted** values automatically update to reflect the change. Your path to the top has never been clearer.

## Keep on Climbing

The summit is close, but we're not quite there yet. With four releases left this year, we're amping up our energy to make sure we bring you the best. Exciting things are coming your way in 2021.6, but make sure to check out the 2021.5 release notes in the meantime to find all this release has to offer.

SS&C Eze releases updates for Eze OMS every six weeks, so each release offers enhancements and new features to offer you more. Contact us for the complete release notes and see all of what 2021.5 can offer you.

Eze OMS 2021.5  
**New Heights.**





Eze Investment Suite  
**2021.6**  
Update Tour





---

## Six is Slick.

Like a perfectly executed dive, 2021.6 has taken the leap and is ready for you to see its winning performance. With loads of new features and enhancements ready to go, this release is sure to make your workflows streamlined and smooth.

Why are we so confident 2021.6 is a winner? Enhancements to **Automated Trading** and **Order Entry Default Rules** in Eze EMS are a great place to start. Eze OMS is serving up even more game-changing enhancements to the **Operations Portal**. And Eze PMA is catching everyone's eye with the new **Capital Gains and Losses** report.

**Learn more about this perfect score.**



Eze EMS 2021.6

# Go for Gold.

## Clearing the path to victory.

We've been training for this moment, and we can't wait to show off our skills! Our teams have been hard at work creating exciting new features and enhancements for Eze EMS that aim to make your run to the finish line effortless and efficient. From Automated Trading and Order Crossing enhancements to new functionality for your Order Entry Default Rules, this release is helping you win with ease. Read on to explore some of the game changing features waiting for you in Eze EMS 2021.6.

## Perfect Execution

Everything you need to stick the landing.

You're the star and Automated Trading is your biggest fan: in this release, we've enhanced our automated trading rule creation by adding the **Action Type** field to the new rule builder. Now you can choose whether an order is automated or manually executed when certain conditions are met, giving you complete confidence in the result of the dismount.

But that's not all! We've also added the ability to quickly search the Account drop-down list when creating an Automated Trading algo wheel, as well as automatic cancellation of staged orders and their automated child orders as soon as the expiration date hits. Go ahead – approach the mount and get ready to fly.

## Ace It Every Time

We've got the attack covered.

Order Entry Default Rules are no stranger in Eze EMS, but in this release we've given them an exciting upgrade. You can now create and save default rules that use Virtual Routes or Server Algo Wheels for execution. Simply open the tab in the Order Entry Properties window and you'll find these routes available in the Route drop-down list. You serve the rules, and Eze EMS will master the attack.

# Dribble, Cross, Goal

Order Crossing enhancements that provide the perfect assist.

All you sell-side customers out there might find this next feature extra exciting. In this release, we're giving you the power to select two orders from the same or different clients and send them to a broker for crossing. Better yet, these orders can be from the same or different Neutral accounts. Want one more perk? They can also be from the same or different Trading accounts.

To help you out with this new functionality, the Enter Order window now displays External Customer details in both the Buyer and Seller panes, and the Trading Account drop-down list is filtered based on the selected external customer. Boot it up and watch the new possibilities soar.

## The Game Goes On

A famous soccer coach once said, "After the game is before the [next] game". So while this game may be over, we're already focused on the next one. Our teams are warming up for 2021.7 and we can't wait to share all the new plays they're planning.

SS&C Eze release updates for Eze EMS every six weeks, so each release offers enhancements and new features to offer you more. Contact us to find out more about what's included in Eze EMS 2021.6.

Eze EMS 2021.6

# Go for Gold.

Eze OMS 2021.6

# Make it Snappy.

## Confidently speed through the day.

We know you have a lot to do throughout the day, and the quicker you can get it done, the happier you'll be. That's why we've introduced a range of new features and enhancements in Eze OMS 2021.6 that not only speed up your workflows but increase your control and give you the confidence to move throughout the day with ease. Dip your toes in the water and explore some of the new features you'll find when you update to 2021.6.

## Your One-Stop Shop

Stocking up the go-to spot for all your operations needs.

We're speeding things up and giving you even more centralized access and control with the **Eze Operations Portal** in 2021.6. With the newly enhanced login functionality, you're automatically logged into the Operations Portal, regardless of whether you're a SQL or Windows NT/Active Directory authentication user.

On top of that, we've added the ability to view historical workflows in the Positions module, as well as view and reverse corporate actions, and even view and download reports that contain all this information.

But that's not all – we've built even more exciting new features and enhancements into the Operations Portal in 2021.6. Check out the release notes to discover more!

## Big Steps for UDFs

Always enhancing broker-level UDF functionality.

We're all pretty big fans of broker-level User-Defined Fields (UDFs), so why not extend their functionality further? Starting in this release, you can use systemwide, broker-level UDFs as the custom criteria when creating commission and fee schedules. Simply select the new **tc\_broker\_ext** option from the Category drop-down menu on the Manage Custom Fee Criteria or Manage Custom Commission Criteria windows and you'll see all available broker-level UDFs in the Property drop-down.



## But wait, there's more!

From sending fractional trade amounts to using improved RESTful Order APIs, 2021.6 offers plenty of other new functionality you won't want to miss.

SS&C Eze releases updates for Eze OMS every six weeks, so each release offers enhancements and new features to offer you more. Contact us for the complete release notes and see all of what 2021.6 can offer you.

Eze OMS 2021.6

# Make it Snappy.

Eze PMA 2021.6

# Easy Street.

Where work can be a treat.

These days, it feels like there's always something there to distract you. That's why we've committed ourselves to streamlining your workflows in Eze PMA and making the data you need easy to find and easy to read. This release introduces new features and enhancements that pave the way for an easy day. Take a stroll through some of the features and discover what's waiting for you in Eze PMA 2021.6.

## The Perfect Summer Read

Love a good read? We do too – especially if it's easy to follow.

That was our thinking when we developed the new **Capital Gains and Losses** report. We created a comprehensive display to become your go-to report for all things Capital Gains and Losses related. This report has everything you need, including that all-important break-down of results into Unrealized and Realized for Open and Closed positions respectively and AICPA-standard bifurcation of FX gains and losses.

Some of the most captivating features of this new report include data sorted into bands, results displayed in both the Local Currency and Fund Currency, and the ability to view results for a defined date range or from the original position acquisition. On top of all that, the new drill-down capability on Closed positions allows you to view associated closed trades and access Trade Tickets. We think we've landed you a best-seller in terms of reporting on your Capital Gains and Losses.

## Speed Things Up

Never lose steam with your Composite Performance reports.

With Eze PMA, we're all about peak performance: when we realized we could speed up Composite Performance reports, we jumped at the opportunity. In this release we've added the new **Enable Daily Weighted Return** columns option to the report settings. Now you can choose whether the Daily Weighted Return columns are included in the grid. Turn this setting on and your report will be loading in a flash.

## Hand in Hand

Eze OMS and Eze PMA make the perfect pair thanks to these Repo enhancements.

We've made changes to the Start of Day procedure and the Eze OMS/PMA Adapter allowing us to more fully support exporting and mapping Repo positions to Eze OMS.

What's changed, you ask?

To start, we've added the new dynamic **OMS Repo Id** column to associated tables. In addition, we created the new **EnableRepoIdExport** setting for the Start of Day Procedure. This allows you to specify whether the Repo rows in the export file are populated with the new **OMS Repo Id** value via the **OMSId** column, or if they are populated with the **OMS Sec Id** and Trade type for all trades, like they've done in the past. Safe to say – it's smooth sailing from here!

## One More to Go

This year has flown by, but we're not ready to say goodbye just yet. With only one PMA release left this year, our teams are working hard to make it the best one yet!

SS&C Eze releases updates for Eze PMA every twelve weeks, so each release offers enhancements and new features to offer you more. Contact us for the complete release notes for 2021.6!

Eze PMA 2021.6  
**Easy Street.**





Eze Investment Suite  
**2021.7**  
Update Tour





---

## Seventh heaven.

Our 2021.7 release is here and it's a dream come true! With updates from the dynamic duo – Eze EMS and Eze OMS – as well as an exciting appearance from trustworthy Eze Investor Accounting, your workday has never been easier.

What are some of the dreamy new features and enhancements waiting for you? Eze EMS is easing the automation of Futures and Options contracts with the new **Root Symbol** condition. Eze OMS is keeping the ball rolling with even more **Operations Portal** enhancements. And Eze IA is backing you up with big updates for the **Maker Checker Staging** functionality.

**Make that dream a reality.  
Let's learn more!**

Eze EMS 2021.7

# Easy Touchdown.

## Supporting you all the way to the end zone.

Like a well-planned play, Eze EMS 2021.7 has what you need to win with ease. Our teams have been working hard packing this release with the features and enhancements that will carry you across the goal line. With Automated Trading enhancements, a new hot button, and so much more, it's hard to know where to begin. Read on for a glimpse of the winning lineup waiting for you in Eze EMS 2021.7.

## The Future is Bright

Enhancing automation one condition at a time.

Are you an Automated Trading user who trades Futures and/or Options contracts? This new trick is for you. We've added the **Root Symbol** condition as an option when creating automated trading rules, allowing you to create and save rules that reference only the root of a contract.

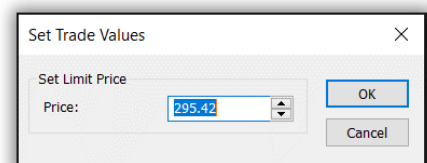
Never worry again about updating each rule any time the symbol changes. With the Root Symbol condition, your rules stay active over time, helping you score that touchdown every time.

## Set the Limit

Control your limit price with one click.

These buttons are hot, and we just can't stop! In 2021.7, we've added yet another exciting new List Trading hot button. This one allows you to verify and modify the Limit Price of an order before it is sent to the broker for execution.

When added to your toolbar, this button will bring up the Set Trade Values popup window with the **Set Limit Price** option. Use this window to confirm or adjust your Limit Price. If you're sending multiple orders, we'll send you a friendly reminder warning you that you're about to set the Limit Price for multiple orders and asking if you want to continue. Give us a quick Yes to send those orders with your confirmed Limit Price on their merry way.





## Easy to Place

Helping you focus on the areas that matter.

Wishing you could easily view pair orders from a specific region? Now you can! In this release, we've added the ability to filter pair orders based on **Region** in the Order Blotter.

But that's not all. We've also included the ability to view the order's region at the pair order level, providing extra clarity and allowing you to focus on what matters most.

## We're Not Done Yet

With only two releases left this year, our teams have their eyes on the prize and are working hard to make sure our final plays give you everything you need and more.

SS&C Eze releases updates for Eze EMS every six weeks, so each release offers enhancements and new features to offer you more. Contact us to find out more about what's included in Eze EMS 2021.7.

Eze EMS 2021.7

# Easy Touchdown.

Eze OMS 2021.7

# A Grand Slam.

## Clear the bases with powerful updates.

Our teams are always working hard to make sure you never strikeout. In this release you'll find game changing features and enhancements that easily carry you home – such as enhancements to Eze EMS/OMS Auto Trade Sync, even more new features in Operations Portal, and the list goes on. Read on to find what's waiting for you when you upgrade to Eze OMS 2021.7.

## Stake Your Claim

**A more seamless approach to EMS/OMS Integration.**

2021.7 boasts another enhancement for Eze EMS/OMS Auto Trade Sync with the ability to require Eze EMS traders to claim orders sent from Eze OMS via Auto Trade Sync. Now, as a portfolio manager trading primarily from Eze OMS, you can be sure that your order is claimed in Eze EMS and that appropriate action is being taken on the other side.

We're not stopping there. We'll be adding some more claiming functionality in future releases, so keep your eyes open!

## The Import(ance) of Positions

**Easing the way for imports in Operations Portal.**

It's an exciting release for Operations Portal with the addition of the **Position Import** module. In just a few simple steps, you can load position data from an Excel file to Eze OMS. Want to know exactly how easy it is? Head on over to the 2021.7 release notes to find the instructions!

We couldn't just stop there for Operations Portal, though, could we? We've also added a few other bells and whistles, including improved notifications that prevent you from accidentally performing simultaneous export or corporate action procedures, ensuring your system continues to run optimally.

## Trading with Speed

Get more done with lightning fast trading workflows.

Our teams are always looking for innovative new ways to improve pre-existing processes, and in 2021.7, we hit the jackpot with functionality that improves performance while executing trading workflows.

So what is this new functionality? You can now use the Trading service when generating new order allocations and when using the Add a Working Broker (F9) window, resulting in improved performance.

## More On-Deck

**Our teams never quit! But like they say, “Championships are won at practice.” We’re working hard to pack our next release with even more winning features and enhancements.**

SS&C Eze releases updates for Eze OMS every six weeks, so each release offers enhancements and new features to offer you more. Contact us for the complete release notes and see all of what 2021.7 can offer you.

Eze OMS 2021.7  
**A Grand Slam.**



Eze IA 2021.7

# Here For You.

## Always helping you shine.

It may only take the spotlight twice a year, but you can trust Eze Investor Accounting to always support your lead. Over the past six months our teams have been working hard to boost Eze IA with new features and enhancements that make existing workflows even better and allow new workflows to take center stage. Read on to explore what's waiting for you in Eze IA 2021.7.

## A Fun Day for Funds

Your friendly Maker Checker Staging function just got even stronger.

Looking to approve Funds in Eze IA? No problem! Beginning in this release, the Maker Checker Staging function now includes Funds entered manually. To support this powerhouse, we've added the new **Staging Information** tab to the Environment Settings Screen. On this tab, you'll find the **Stage Fund Information** checkbox. When checked, manual additions and edits of funds are moved to a separate staging table, allowing you to easily approve funds.

But there's more where that came from. The Fund Setup Screen has been fortified with new highlighting for funds awaiting approval and a message on forms with details pending approval. And for some extra clarity, the Maker Checker Approval Screen now displays the **Fund Code** and **Fund Name** in the Description column when approving funds.

There's still so much more. Check out the Eze IA 2021.7 release notes to find all the Maker Checker upgrades.

## One for the Money

Need more options for funds with multi-currency? We've got it.

We've enhanced Eze IA with new screens, imports, overrides, and reporting to track Local Cost. Like the new **Investor Local Cost Override Import and Utility** that allows you to override the local cost amounts for an investor. Or the three new report types in the Local Cost Report that help you easily review local cost.

There's also the new **Currency** field on the Investor Role Screen and Import that allows you to enter a default currency to an Investor Role, and so much more!

## Down to the Wire

Expanding your Fund Wire Instruction capabilities.

Looking for more when using Fund Wire Instructions in Eze IA? We've got you covered. In this release you'll find new fields and wire role options for Wire Instructions as well as imports and layouts on several screens.

But what does this mean exactly? To start, the Fund Setup Screen now includes a **Wire Instructions** section that allows you to easily view, add, edit, or delete any fund wires, and the Wire Form includes a new **Active** checkbox that tracks whether instructions are still in use.

But we didn't stop there. In addition to enhancements made to the Maker Checker Staging function to support Wire Instructions, we've added the new Wire Role Setup Screen, which gives you the option to create your own Wire Roles specific to your funds.

And as a cherry on top, we've added the **Fund Additional Wire Instructions Import** and **Report**, allowing you to import one or many wire instructions in an existing fund setup and review all wire instructions in the fund setup.

## The Fun Never Ends

We love showing off these new tricks, but there's even more available to you. Make sure to check out the Eze Investor Accounting release notes to discover all the new features and enhancements at your disposal.

SS&C Eze releases updates for Eze IA every six months, so you can count on getting a feature packed update. Contact us for the complete release notes and see all of what 2021.7 can offer you.

Eze IA 2021.7

# Here For You.





Eze Investment Suite  
**2021.8**  
Update Tour





## Eight Days a Week.

Yes you know it's true: Our teams are committed to you and making sure your workflows are calm, consistent, and controlled, whether it's Monday, Friday, or any day in between.

With releases from Eze EMS, Eze OMS, and Eze PMA, you can trust the 2021.8 release to support you in every way. Starting with increased protection from **Buying Threshold** exhaustion in Eze EMS, an overhaul of the **Change Working Amount** window in Eze OMS, and a new **Dividend Accrued Change in Period** report in Eze PMA, it only gets better from there.

**We are here for you.  
Let's explore what's new!**

# Eze EMS 2021.8 Checkmate.

## Strategic moves to win the game.

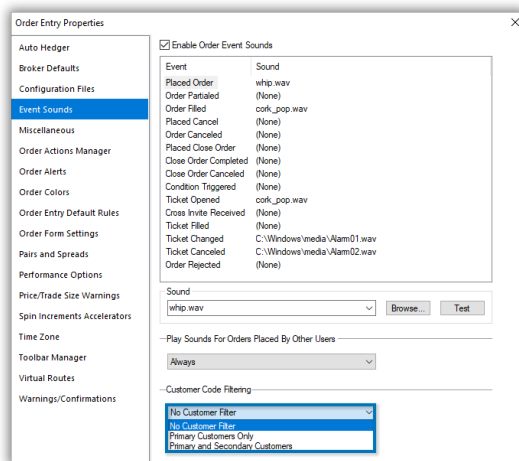
We have our pieces in place and we're ready to clear the board of all distractions. In 2021.8, we've introduced a variety of tactical plays that help you change the game. While some background work helps build the perfect opening gambit, you now have enhancements to Event Sounds, Buying Power thresholds, and the MarketMaker ladder view that help you keep your king safe. Read on to learn what's waiting for you when you upgrade to Eze EMS 2021.8.

## Aiding the Arbiter

Put your focus where it's needed.

Are you a sell-side user trading for specific customers? This Event Sound enhancement is just what the doctor ordered. In this release, we've introduced the ability to specify the customers for whom you hear event sounds throughout the trading day, allowing you to only focus on what matters to you.

To create this peace of mind, define your **Customer Coverage** in the Configuration Files tab of the Order Entry Properties window (your SS&C Eze client service representative can help you with that!). Then, head on over to the Event Sounds tab where you'll find the new **Customer Code Filtering** drop-down list (shown left). Use this list to select whether you would like to hear all sounds (No Customer Filter), sounds for your Primary Customers Only, or sounds for both your Primary and Secondary Customers.



## Power Play

Always maintain complete control.

Worried about exhausting your Buying Power? We'll make sure that never happens. Starting in this release, you can set rules that trigger email or text alerts whenever the specified Buying Power threshold is reached for an account.

AMP is your go-to if you want to implement this trick. Navigate to the Options drop-down list and discover the new **Buying Power Alert Rules** option. Simply add a new rule and get yourself ready to never exhaust that Buying Power again.

# Colorbound and Climbing

Adding more color to your MarketMaker Ladder.

We know how heavily you can depend on the Eze EMS MarketMaker. We also know you often have a massive amount of data you need to interpret at a mere glance. That's why our teams are working hard to improve the appearance of the MarketMaker Ladder view.

Using the new **Shaded Background** checkbox on the Display Options window, you can set the Bid/Ask colors as the background color of the MarketMaker ladder. This means the Ladder view can now use the specified Bid color as the background for the Bid side of the ladder, and the specified Ask color as the background for the Ask side of the Ladder.

But we're not stopping there! Our teams are looking for even more ways to improve your MarketMaker Ladder. Keep your eyes open and don't miss more perks coming your way!

## One Move Left

We're nearing the endgame and calculating our final moves. Our teams are already working hard to make sure our last release of the year is packed with everything you need to enter the new year in a winning position.

SS&C Eze releases updates for Eze EMS every six weeks, so each release offers enhancements and new features to offer you more. Contact us to find out more about what's included in Eze EMS 2021.8.

Eze EMS 2021.8

# Checkmate.



Eze OMS 2021.8

# Aim High.

## Leading you towards your big goals.

They say, "Shoot for the moon. Even if you miss, you'll land among the stars." With Eze OMS, we think you should reach that moon every time. That's why we've filled this release with new features and enhancements that help you sharpen your focus and achieve your goals. Ready to hit your bullseye? Read on to explore the tricks ready for you in Eze OMS 2021.8.

## Analytics is a Virtu

Calling all Virtu Financial® subscribers!

We're always looking for ways to help you make efficient and informed trading decisions. That's why we're thrilled to introduce the new **Virtu Portal** widget, integrating Virtu Financial analytics with Eze OMS at the click of a row.

If you are subscribed to Virtu Financial, you can view pre-trade cost and risk analytics data for a selected symbol on the Trade Blotter, allowing you to quickly incorporate additional data when trading.

## Can't Stop, Won't Stop

The repo functionality enhancements just keep coming.

It's been a big year for repos in Eze OMS, and with new Trade Importer repo functionality, 2021.8 is no exception. Beginning in this release, you can create repo trades outside of Eze OMS, and then import them via Trade Importer while leveraging Repo Deal Manager.

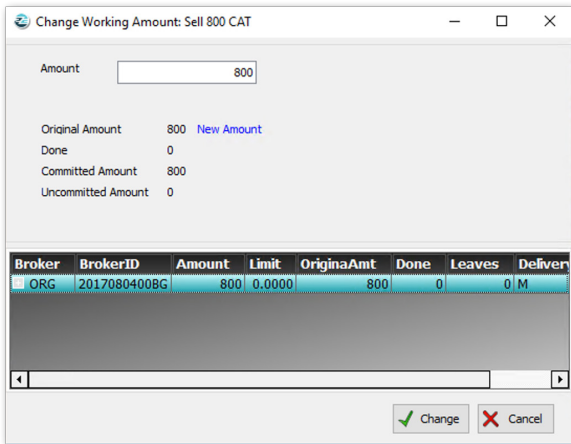
This new functionality uses an updated Trade Importer template, so be sure to check out the 2021.8 release notes for a thorough breakdown of the new columns.

# A Big Change

## Overhauling the Change Working Amount window.

You'll notice a completely updated **Change Working Amount** window when you upgrade to 2021.8. From performance and workflow improvements to improved grid customizability and clearer messaging, we've added exciting new functionality that's here to benefit your day-to-day trading.

For example, you can now simultaneously update the trade Amount, multiple broker Amounts, and/or multiple broker Limits. But that's not all, you can also use the updated Change Working Amount window to customize the active brokers area — add any Trade Blotter columns to the grid and then save your customized view.



## Finishing Strong

It's time for the upshot: with just one release left this year, our teams are making sure we hit the target. We're hard at work on updates that will help you soar in the new year. Hold onto your hats; we're making sure we finish strong.

SS&C Eze releases updates for Eze OMS every six weeks, so each release offers enhancements and new features to offer you more. Contact us for the complete release notes and see all of what 2021.8 can offer you.

Eze OMS 2021.8

# Aim High.

Eze PMA 2021.8

# A New Chapter.

## Getting you ready to turn a new page.

It's hard to believe, but it's time for Eze PMA to close out 2021, and you can always trust us to go out with a bang. We've filled this release with groundbreaking new features and enhancements that will carry you through the holidays and into a bright new year. With new reports and the ability to import Historic Composite Performance data, we're setting you up for success. Keep reading to learn more about what's waiting for you in Eze PMA 2021.8.

## Pick and Choose

### Enhancing your Performance Reporting.

In previous versions of Eze PMA, recalculating performance and Composite performance data required you to recalculate for all fund groups, funds, and/or composites — even if you're only looking for a specific one. If you're managing big funds, this may have added some time to your day.

In this release, we've enhanced the **Calculate Daily Performance (without Composites)** step to include two new settings that allow you to select specific funds and fund groups to include when recalculating performance data.

And there's more where that came from! We've also enhanced the **Calculate Composites** step to include a new setting that allows you to select specific composites to include when recalculating performance data. Get ready to watch your procedure performance thrive!

## The Rest is History

### Providing access to the past.

Are you a new Eze PMA client or an existing client that's looking to on-board historic composite fund details? This release has your key. Eze PMA now supports importing historic composite performance data using the new **Historical Composite Performance Import** procedure.

But that's not all. Once the historic data is in your system, you can then use the **Calculate Performance Procedure** to calculate the performance returns, such as Composite Return, Gross Composite P&L FC, Composite P&L FC, and Gross Composite Value FC Start. Access to the past has never been easier.



# Clear Detection

Tracking Your FX Contracts.

Just like a well-trained detection dog, the new **FX Contract Gains and Losses** report is here to help you seek out those all-important FX Gains and Losses for all your FX Contracts, and we've given you two ways to do it.

First choice: Track your FX Gains and Losses specific to and calculated based on the reporting period dates.

Second choice: Track your FX Contract value changes based on individual FX Contract start dates and the reporting period end date.

What are you waiting for? Head on over to the FX reports suite and start uncovering your FX Gains and Losses!

## A Bright Road Ahead

We may be done for 2021, but our teams already have their eyes set on what 2022 can bring, and we're seeing plenty of possibilities. We can't wait to reunite and share this excitement with you in the new year!

SS&C Eze releases updates for Eze PMA every twelve weeks, so each release offers enhancements and new features to offer you more. Contact us for the complete release notes for 2021.8!

Eze PMA 2021.8

# A New Chapter.





Eze Investment Suite  
**2021.9**  
Update Tour





## To the Nines.

2021.9 is here and it is ready to strut its stuff! It's the final release of the year, and you can be sure we pulled out all the stops. Get the champagne bottles ready — we're finishing the year with a bang.

What exactly are we celebrating? In the final 2021 release, we've boosted Eze EMS and Eze OMS with new features and enhancements that will sweep you off your feet and into the new year. In Eze EMS we've introduced **Crypto Trading**, providing you with the ability to trade crypto currencies. In Eze OMS, you'll find the new **Holiday Calendar Codes** table and the ability to assign currency holidays to securities.

**Pop the bottle, sit back, and relax.  
Let's explore.**



Eze EMS 2021.9

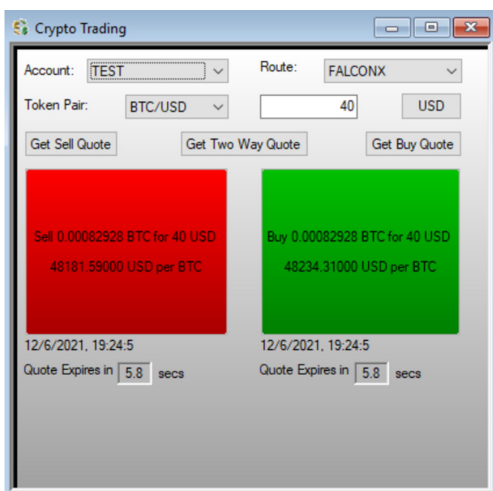
# A Bright Future.

## Embracing possibilities.

The year may be over, but our teams are focused on where Eze EMS can bring you in the future. We've packed this release with a variety of valuable new features and enhancements and one huge surprise: the ability to trade crypto currencies from Eze EMS. That's right! We've gone digital. Read on to learn more about Crypto Trading and some of the other powerful enhancements waiting for you in Eze EMS 2021.9.

## Introducing Crypto Trading

Bringing you into a whole new world of possibilities.



Behind the scenes, our teams have been laying the foundation for this exciting new feature, and now it's here! We are thrilled to finally show off the new Crypto Trading functionality – bringing the ability to trade crypto (digital) currencies right to Eze EMS.

Say hello to the **Crypto Trading** window – your go to for all things crypto trading. Easy to find in the Trading menu, you can use this shiny new window to configure your order details and request sell or buy quotes for a selected token pair.

But that's not all, we've also added the **Set up your EZE EMS Crypto Account** section in RealTick Extra. You can use this new page to set up, save, modify, or delete your Eze EMS Crypto Trading credentials.

Just a quick heads up: you need to be connected to FalconX and use their RFQ workflow to trade crypto currencies in Eze EMS. Contact your SS&C Eze client service representative for help setting this up.

There's so much more to share. Check out the Eze EMS 2021.9 release notes for detailed instructions on how to use these two new interfaces.

## Set Your Limits

Giving you the power to limit your loss.

You may be familiar with the Max Loss column on the Account Balances Minder, but in this release, it's gotten a bit of a makeover. We've added the ability to click into the Max Loss column and edit the **Max Loss Limit** per account. If the account reaches the limit, then all traders are locked out until the loss drops. Managing your risk per account has never been easier.

## Never Miss a Beat

Pocket-sized updates to keep you in check.

Over the past couple releases, our teams have been working hard to improve the email and text alerts you receive from Eze EMS, and 2021.9 is no different. In this release, we've added/updated several fields on the Email/Text Alerts page that provide you with the ability to receive email or text alerts for newly added staged or child orders.

On top of that, the new **Select Symbology** field allows you to define the symbology in which you'd like to receive the fill alerts. Stay informed throughout your day.

## A New Beginning

They say, "From every ending comes a new beginning," and we completely agree. This may be our last release of 2021, but it's only the beginning of the first release of 2022. Our teams are already laying the groundwork and cooking up thrilling new features and enhancements that will be coming your way in the new year, so stay tuned!

SS&C Eze releases updates for Eze EMS every six weeks, so each release offers enhancements and new features to offer you more. Contact us to find out more about what's included in Eze EMS 2021.9.

Eze EMS 2021.9  
**A Bright Future.**

Eze OMS 2021.9

# Seeing Clearly.

## Clearing the way for a new day.

After a year of hard work, you'd think we'd be tired, but we're just getting ready to go. We're sending 2021 off with a release that's jam-packed with exciting new features and enhancements. We're talking about even more updates to Operations Portal, enhancements for closing repos, and so much more! What are you waiting for? Explore what's waiting for you in Eze OMS 2021.9.

## Giving Currency to Holidays

A new way to manage your holidays.

We know that accounting for a security's holidays is critical for accurate settlement dates, accrued interest calculations and cash projections. That's why we've got your back. In 2021.9 we've added currency holidays to Eze OMS.

We're thrilled to introduce this feature, which includes support for currency holidays in the System Data Manager Holidays table and the new **Holiday Calendar Codes** table, which brings increased flexibility through the use of holiday calendar codes. These calendar codes can be used to combine holiday calendars for multi-jurisdictional OTC securities. But their strength doesn't stop there: these codes can also be applied to fixed income securities via new functionality in the Security Information window.

This barely brushes the surface, make sure to take a look at the Eze OMS 2021.9 release notes for detailed information about this exciting addition!

## The Future of Repos

More control when closing Repo trades.

Tired of living in the present when it comes to repo trades? In Eze OMS 2021.9, we've given you the power to apply a future End Date value when you close a repo. By applying a future End Date to repos, you can directly impact the interest accrued during the trade's lifecycle, which is then reflected in your Repo Deal Manager.



# No Issues with Issuer Information

Operations Portal updates that just don't stop.

With each passing release, Eze Operations Portal is becoming more of a central resource for your operations needs. With the introduction of the **Issuer Information** module, 2021.9 is no exception.

The Issuer Information module provides easy to use workflows for functions previously available in the Issuer Information window – such as the ability to add, edit, and delete issuer agency information – in an updated and centrally located user interface.

## Tomorrow Starts Today

We're closing up shop for 2021 but opening the doors to 2022. Our teams are dreaming up all the exciting new places we can take Eze OMS in the new year. Sit back and get ready to enjoy a brand-new show.

SS&C Eze releases updates for Eze OMS every six weeks, so each release offers enhancements and new features to offer you more. Contact us for the complete release notes and see all of what 2021.9 can offer you.

Eze OMS 2021.9  
**Seeing Clearly.**